

Fig.3.

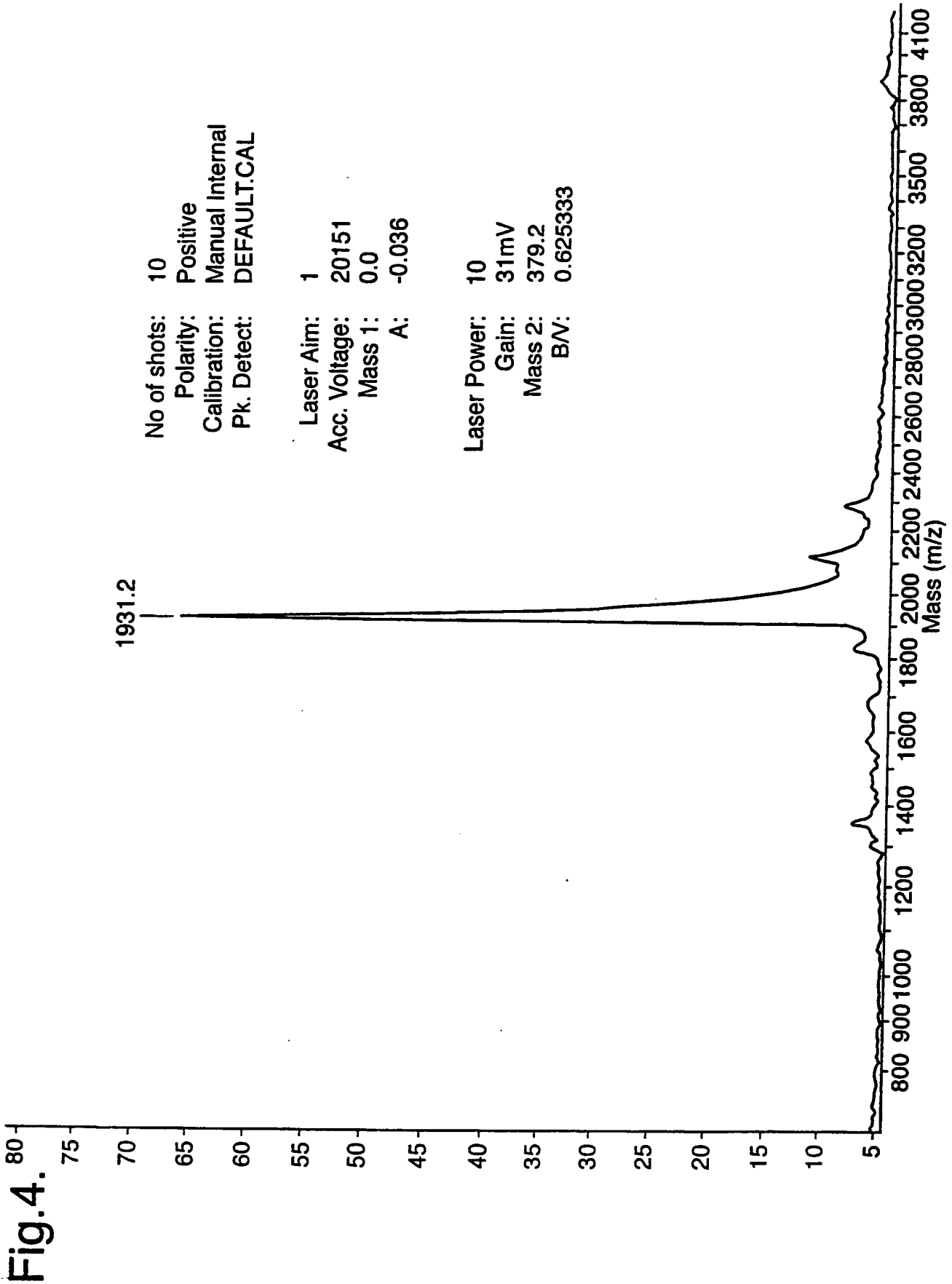
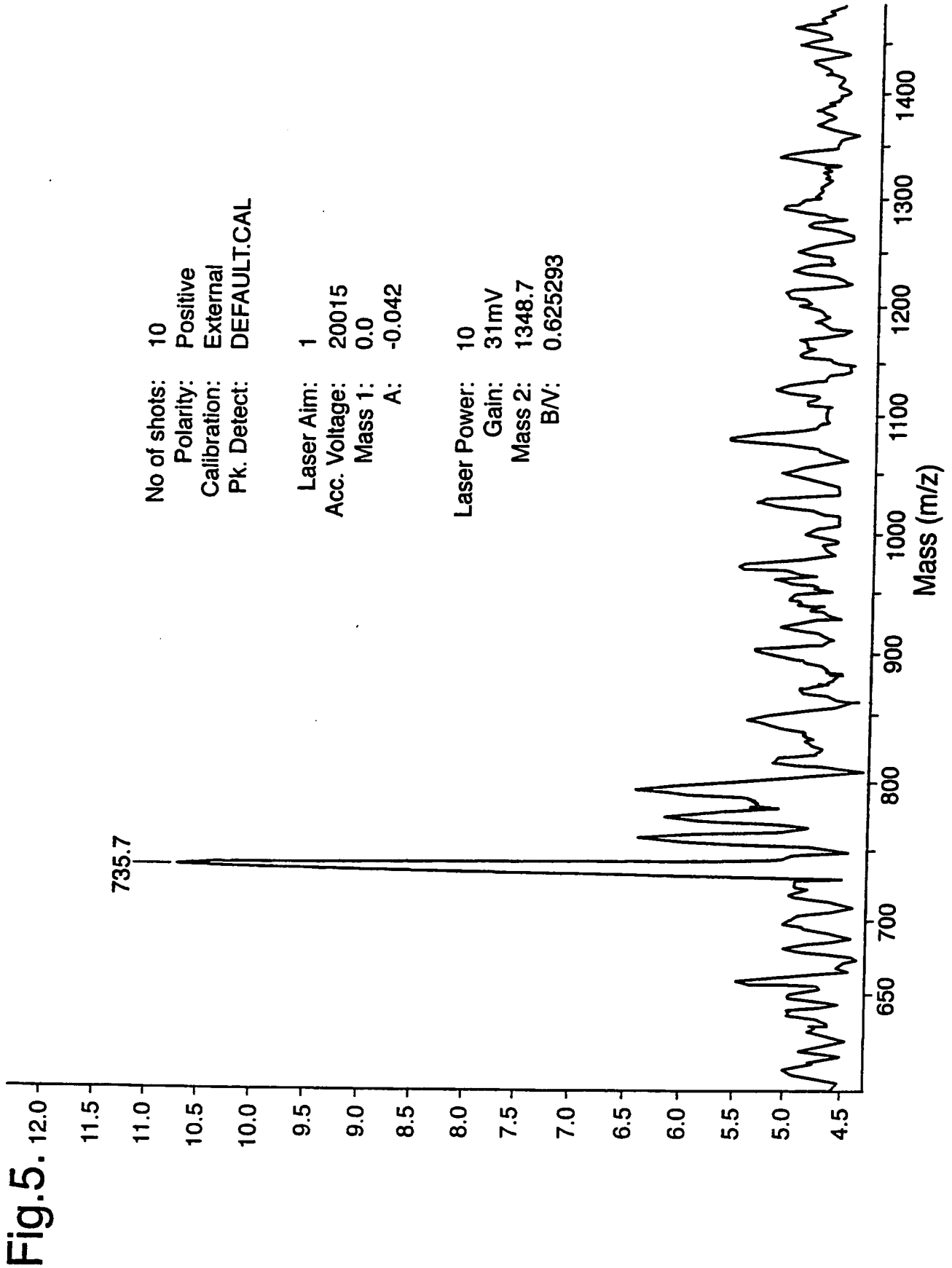


Fig.4.



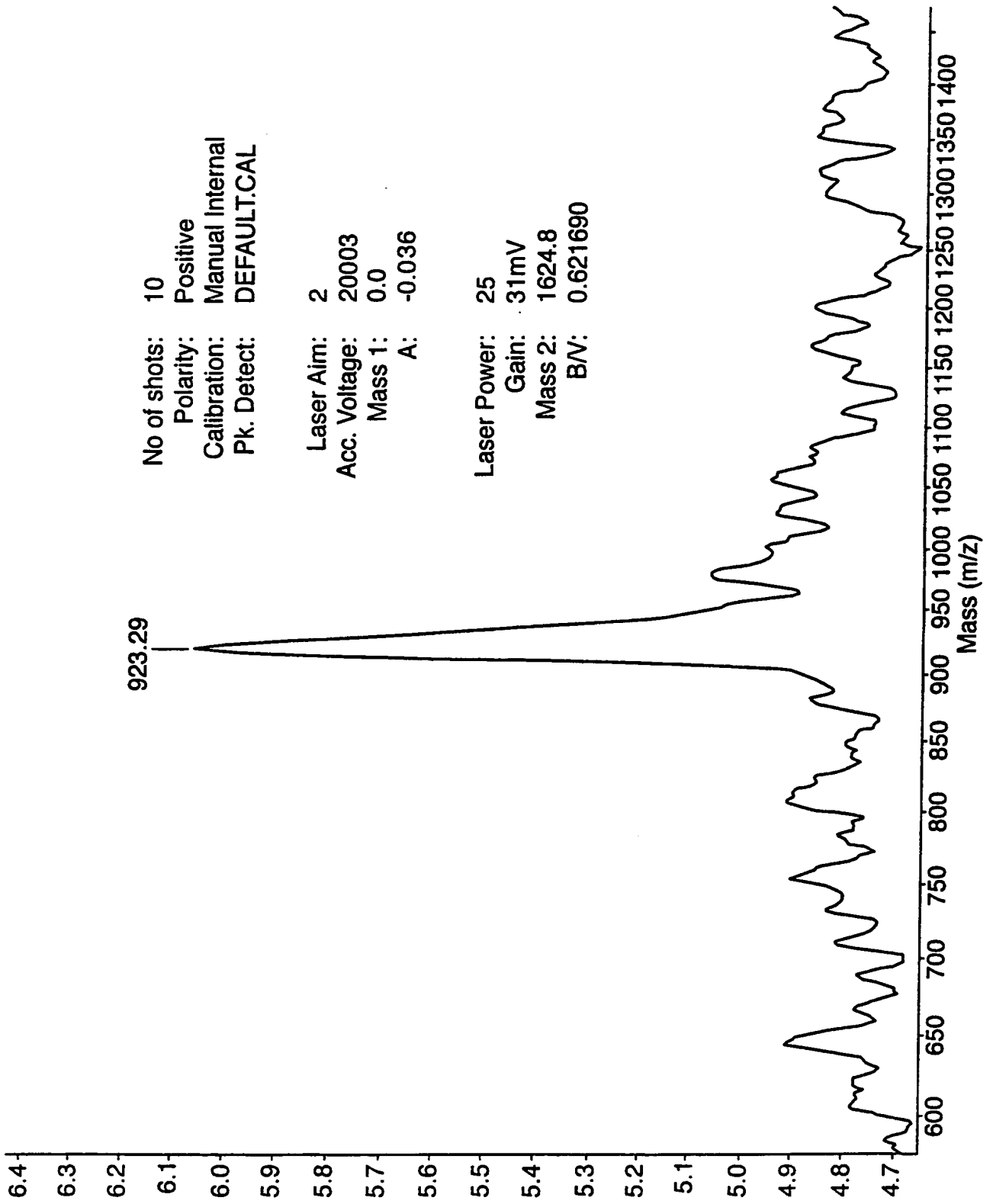
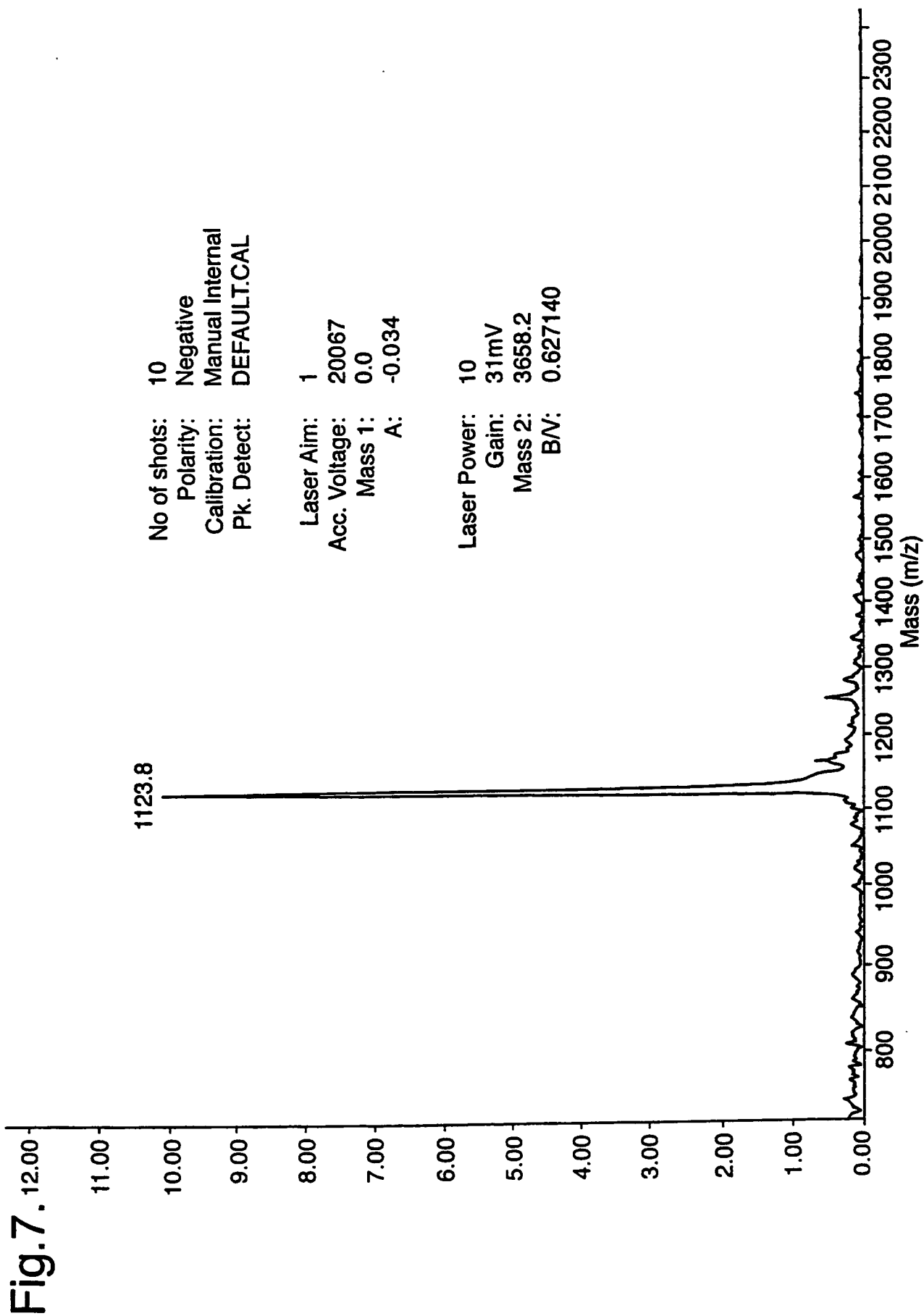


Fig.6.

7/18



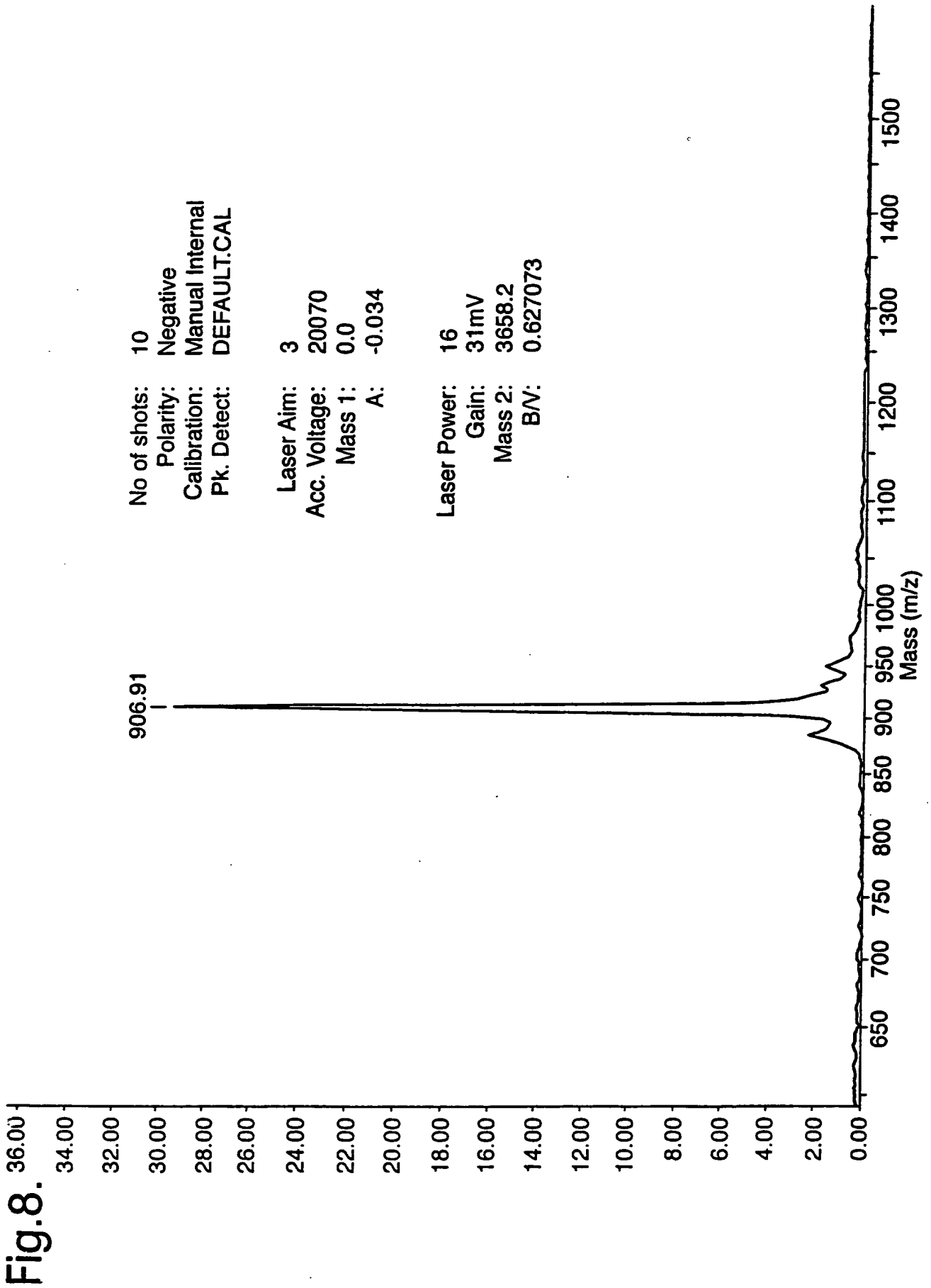


Fig.8.



9/18

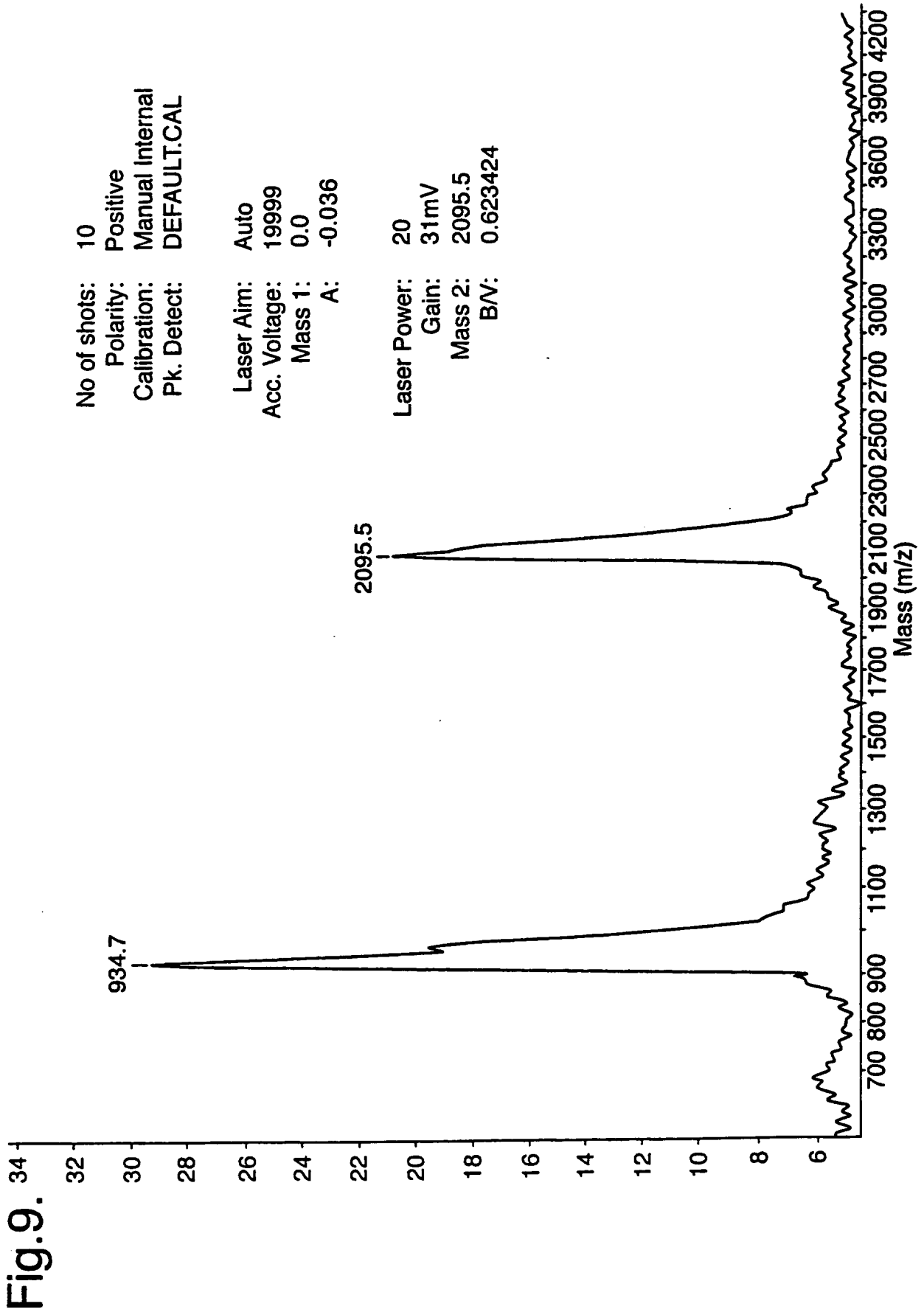


Fig.9.

10/18

No of shots: 10  
Polarity: Positive  
Calibration: External  
Pk. Detect: DEFAULT.CAL

Laser Aim: 1  
Acc. Voltage: 20023  
Mass 1: 0.0  
A: -0.042

Laser Power: 13  
Gain: 31mV  
Mass 2: 1348.0  
B/V: 0.62421

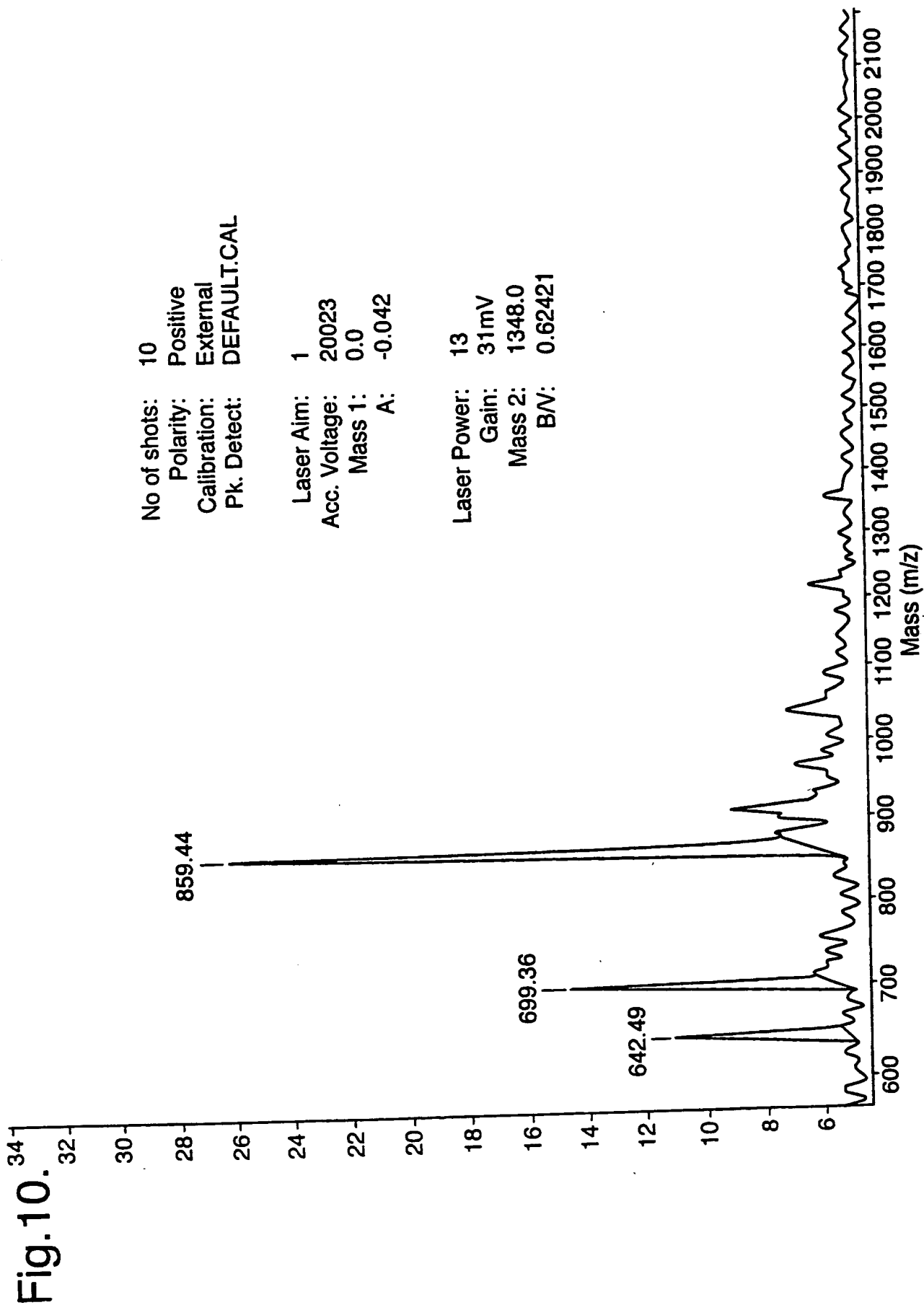
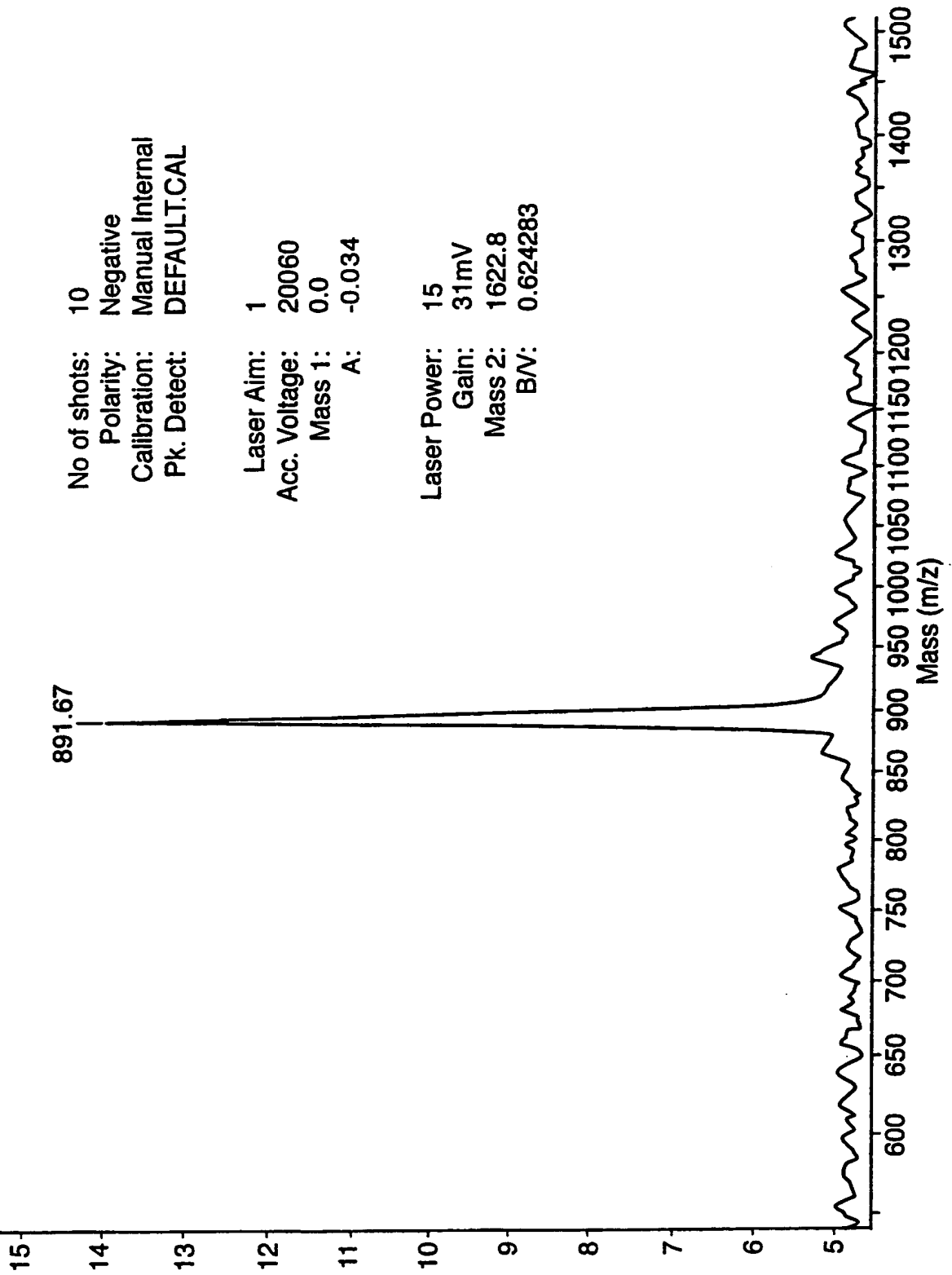


Fig.10.

11/18

Fig. 11.16

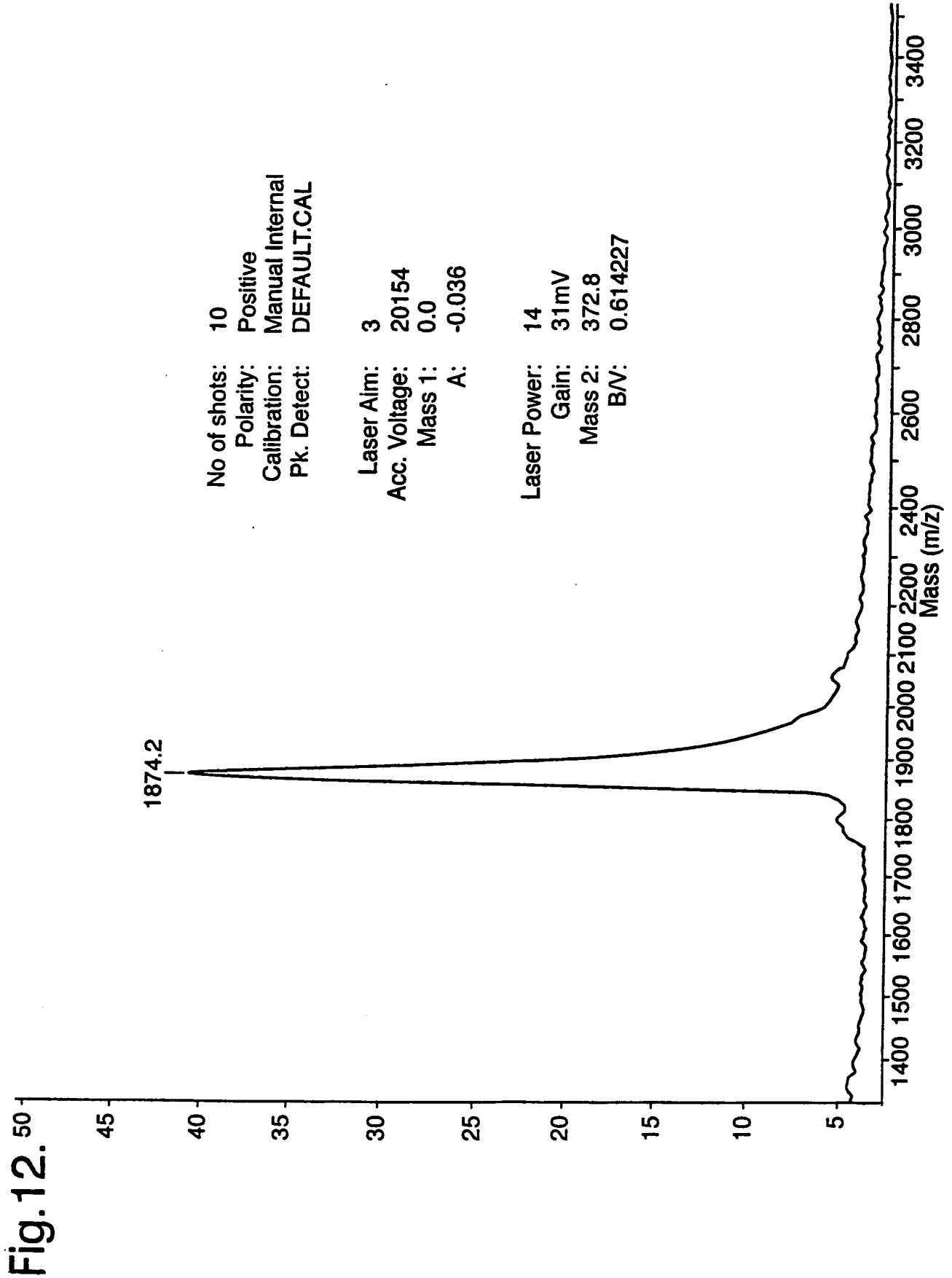


No of shots: 10  
Polarity: Negative  
Calibration: Manual Internal  
Pk. Detect: DEFAULT.CAL

Laser Aim: 1  
Acc. Voltage: 20060  
Mass 1: 0.0  
A: -0.034

Laser Power: 15  
Gain: 31mV  
Mass 2: 1622.8  
BV: 0.624283

12/18



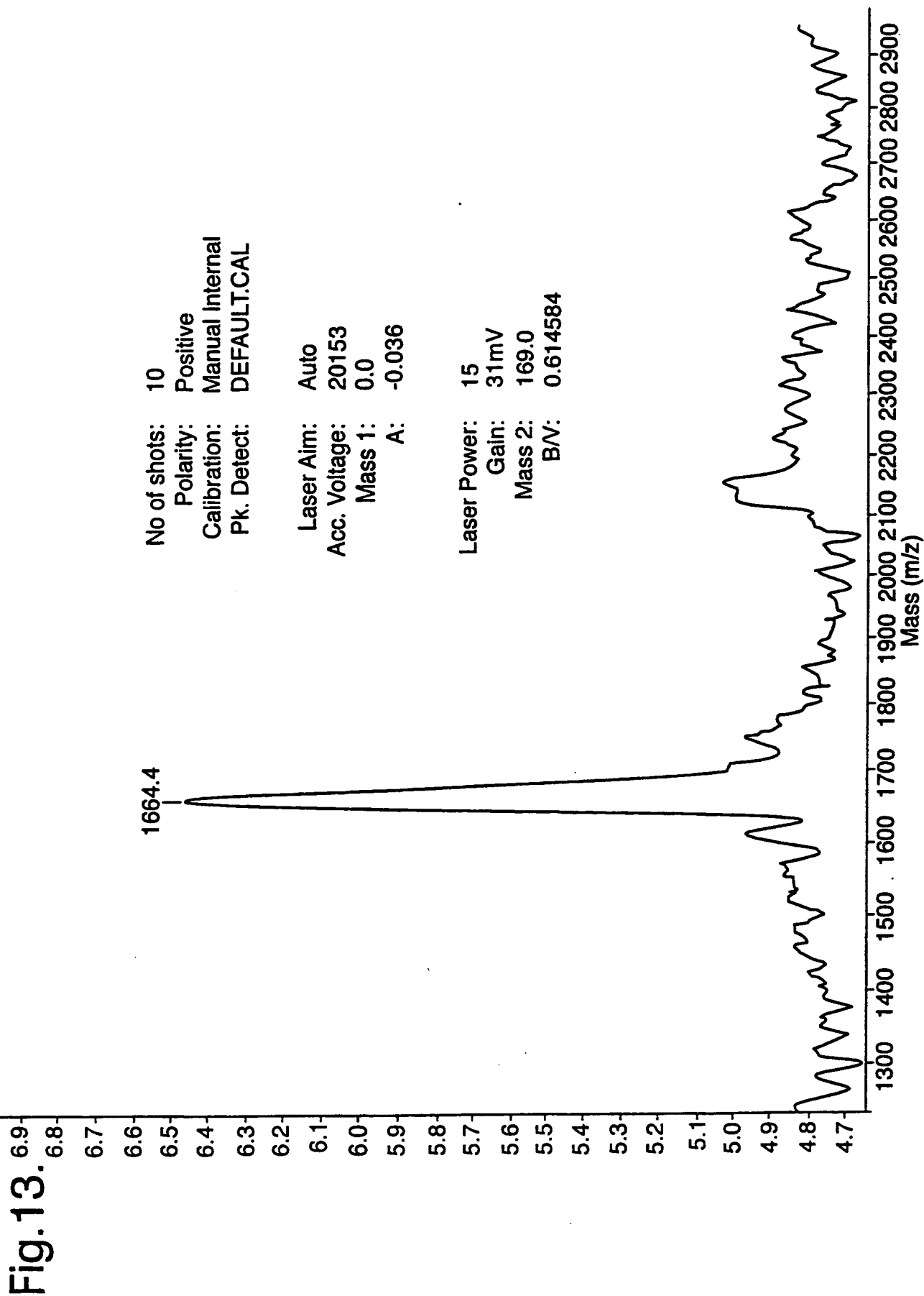
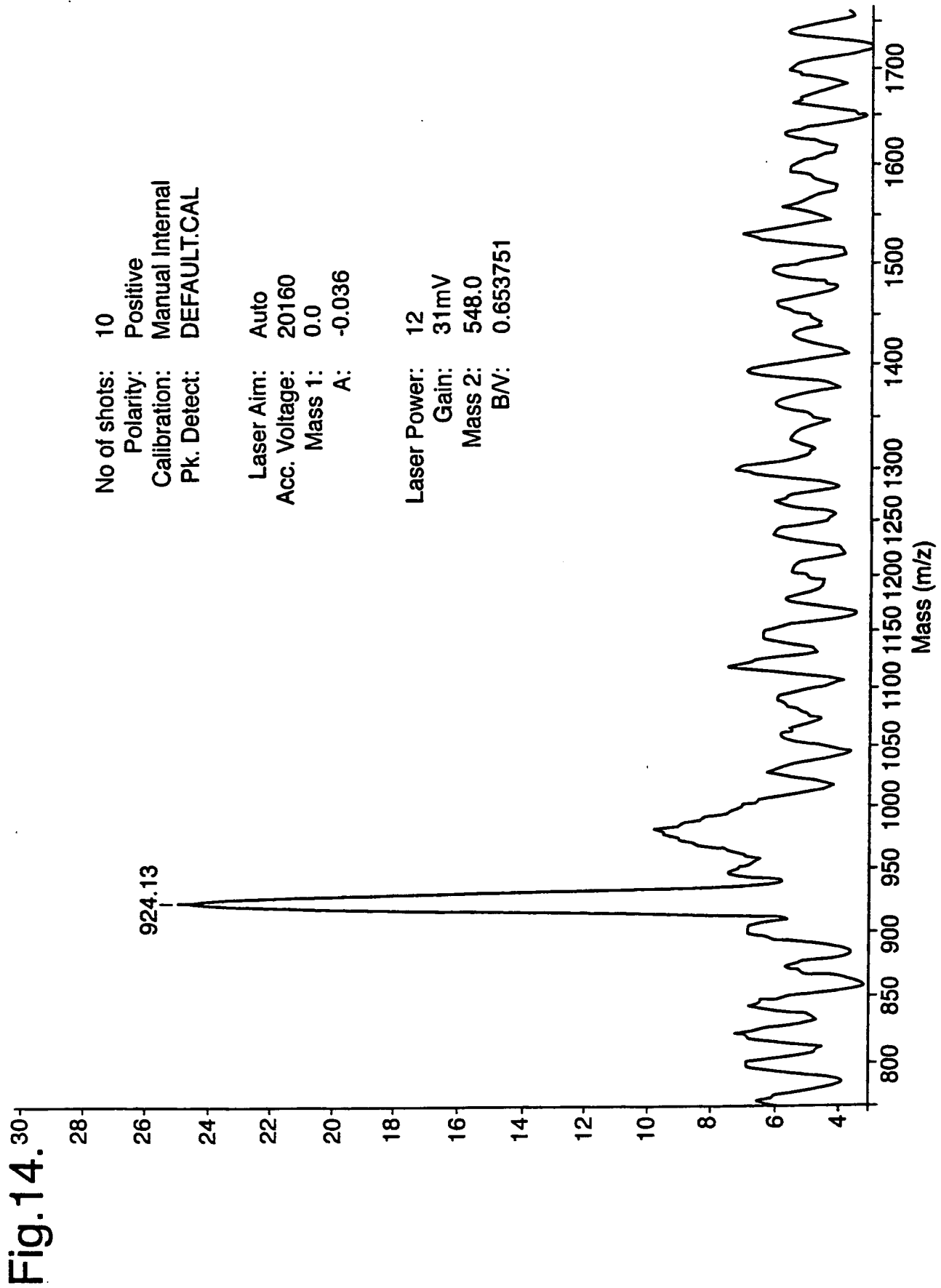


Fig. 13.

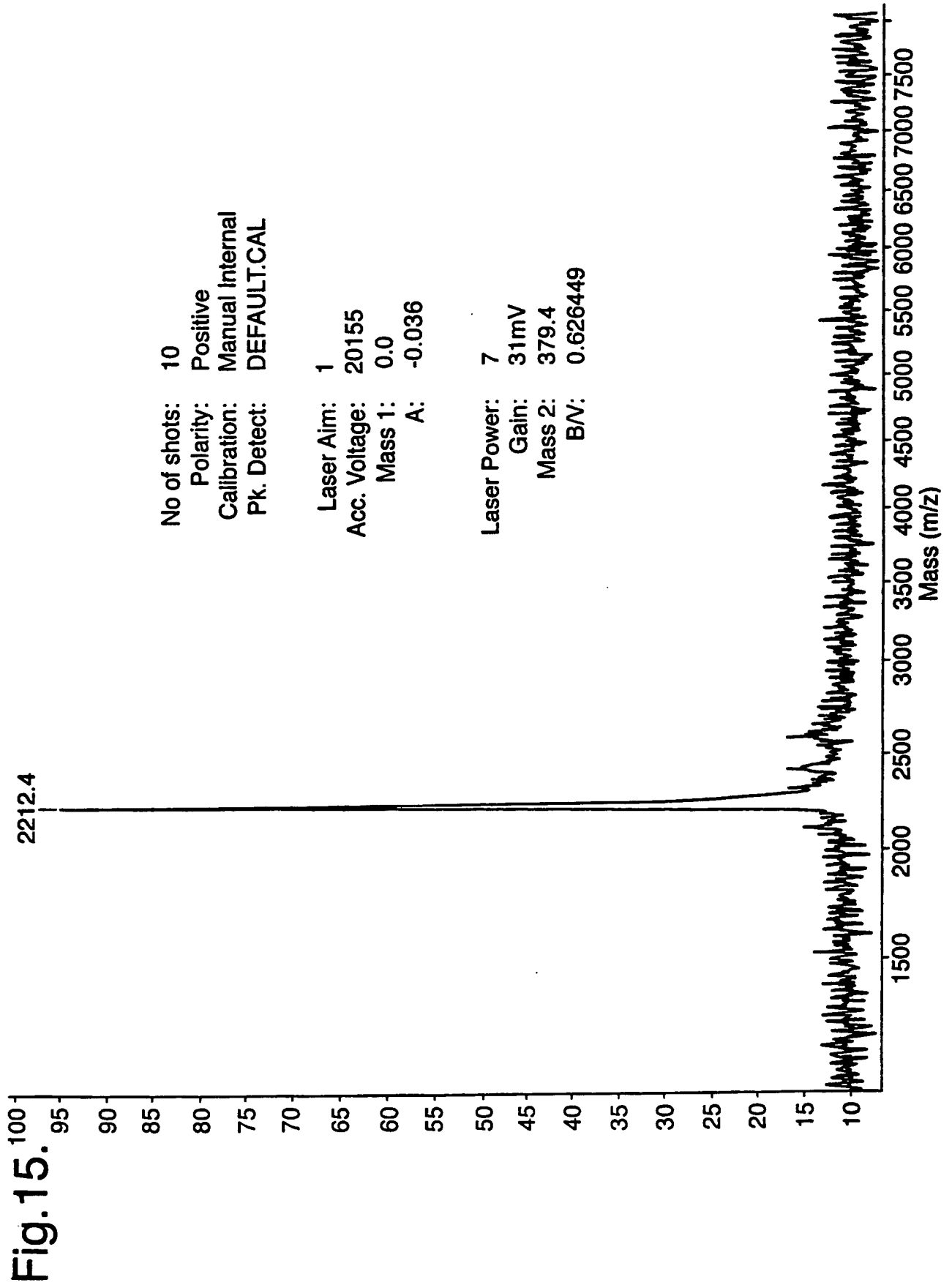


No of shots: 10  
Polarity: Positive  
Calibration: Manual Internal  
Pk. Detect: DEFAULT.CAL

Laser Aim: Auto  
Acc. Voltage: 20160  
Mass 1: 0.0  
A: -0.036

Laser Power: 12  
Gain: 31mV  
Mass 2: 548.0  
B/V: 0.653751

Fig. 14.



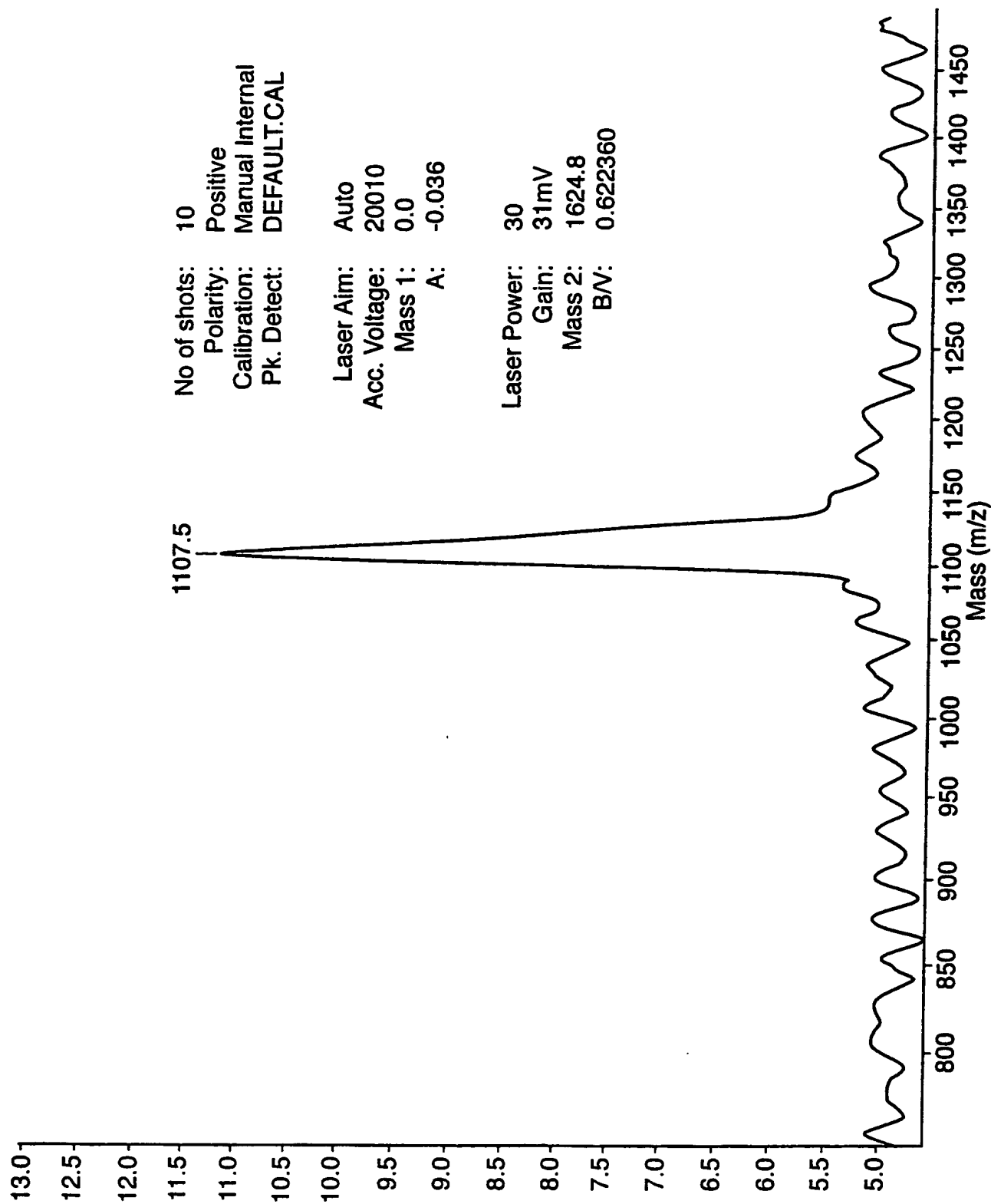


Fig.16.



